

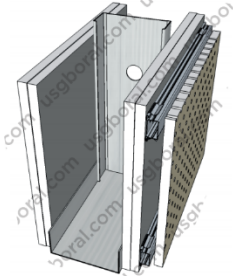
## Standard Optimum - Acoustic (SS-17)

### Description

Frame : JayaBMS Wall Track, JayaBMS C Stud

Lining : 2 layers of Jayaboard Sheetrock 12mm (both sides)  
+ 1 layer of USG Boral Jayabell 12mm (1 side)

Weight : ± 39 kg/m<sup>2</sup>



STUD SIZE (mm)		MAXIMUM HEIGHT (mm) Non-Load Bearing Studs			WALL THICKNESS (mm)	FIRE RATING (minutes)	ACOUSTIC RATING (STC)	
Width	Thickness	@600mm centres	@400mm centres	Grade BS 5234			Without Insulation	Insulation Mineral Wool 50mm
64	0.4	4250	4400	Heavy Duty	149	Non FRL	41	51
	0.5	4300	4500			up to 60		
	0.7	4450	4700			up to 60		
76	0.4	4650	4850		161	Non FRL	42	52
	0.5	4750	5000			up to 60		
	0.7	4950	5250			up to 60		
92	0.5	5350	5600		177	up to 60	42	52
	0.7	5550	5900			up to 60		
100	0.5	5600	5900		185	up to 60	43	53
	0.7	5850	6250	up to 60				
150	0.7	7350	8150	235	up to 60	45	53	